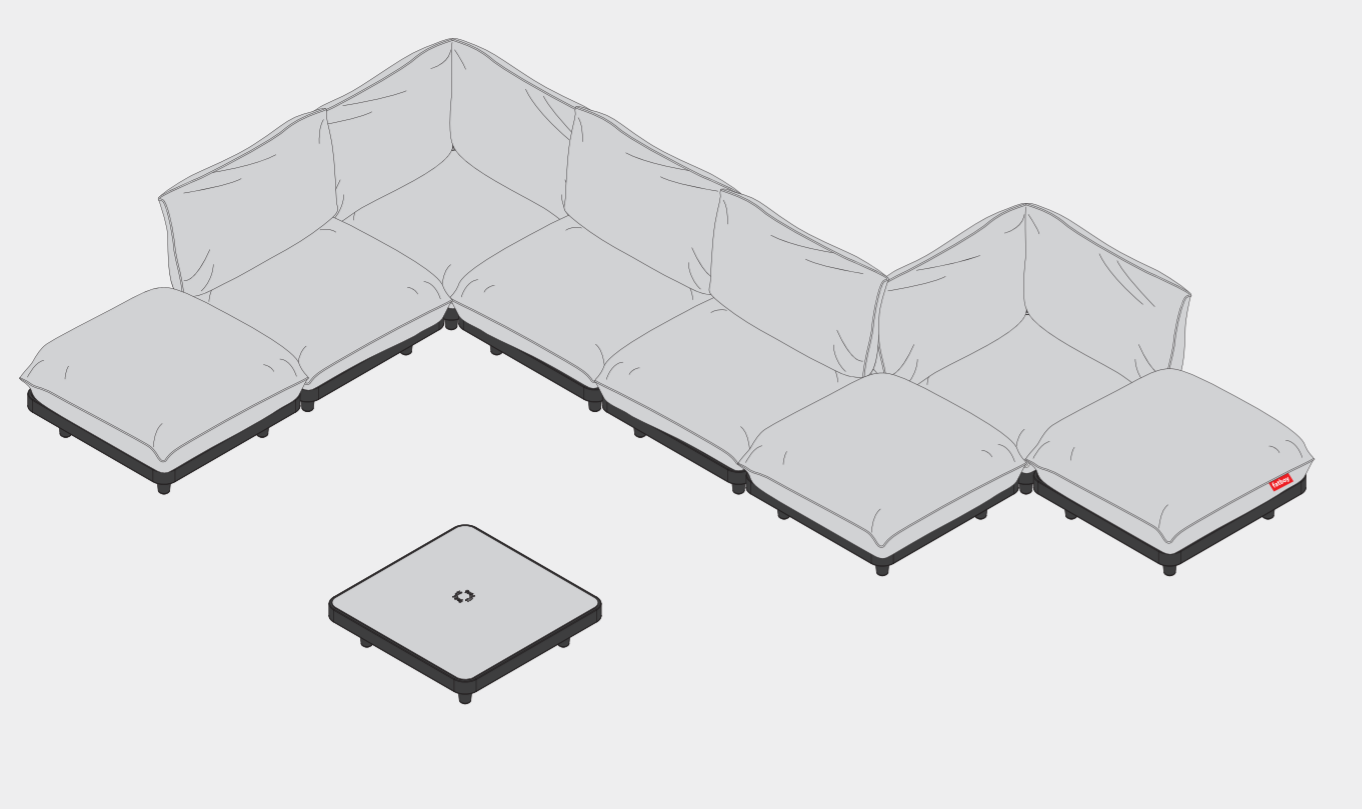
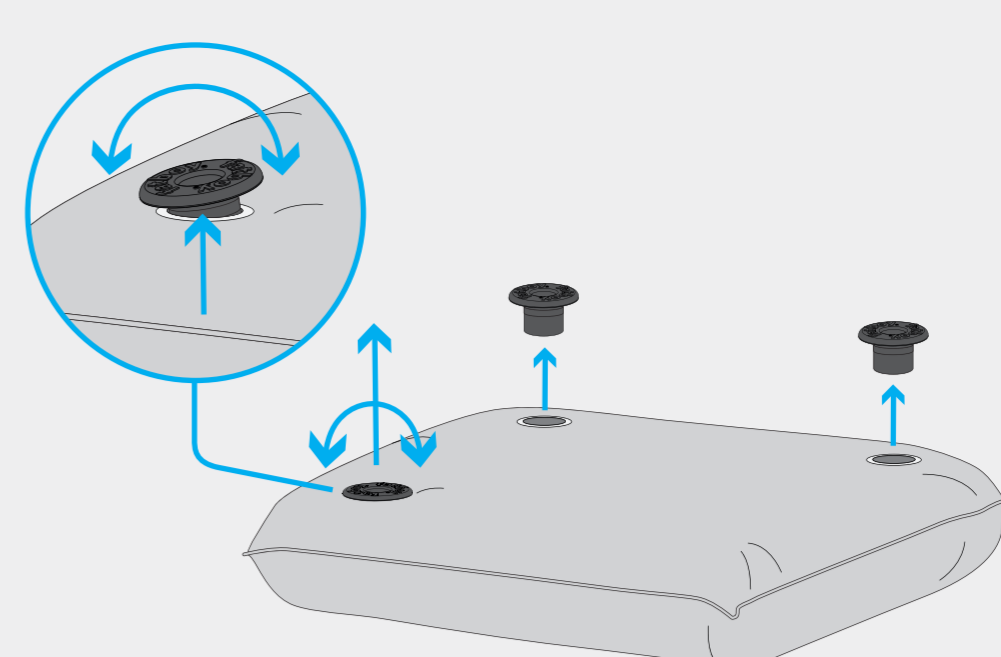


PALETTI OUTFIT REPLACING MANUAL

Fatboy.

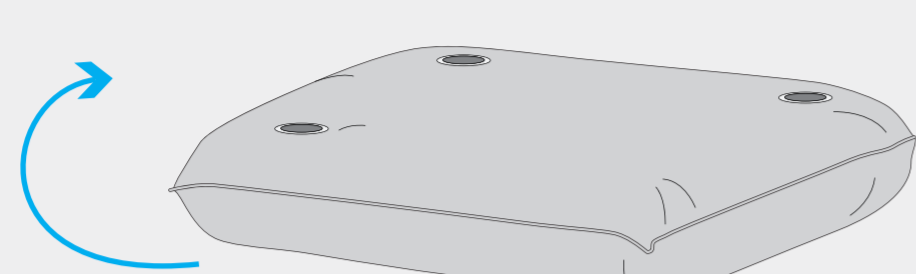


STEP 1

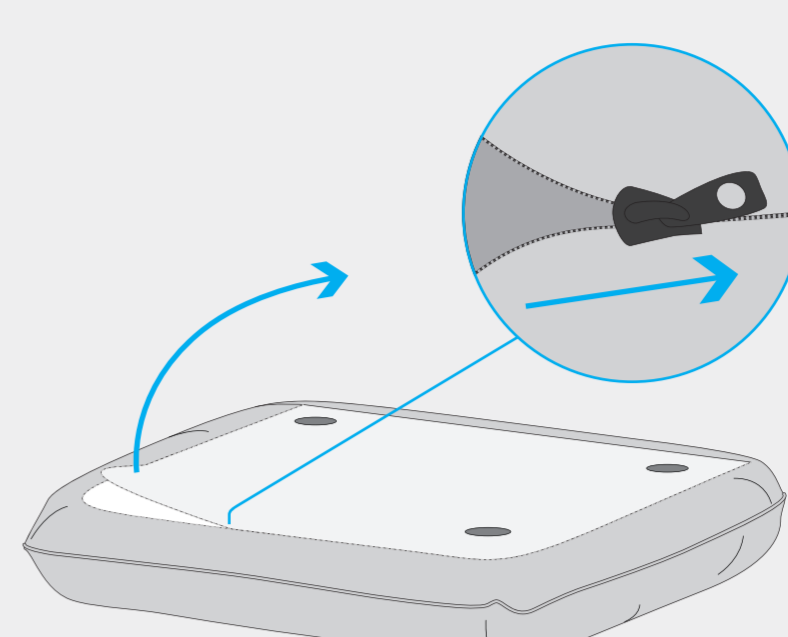


Pull and 'wiggle' out the tube guides. They're stuck with velcro.

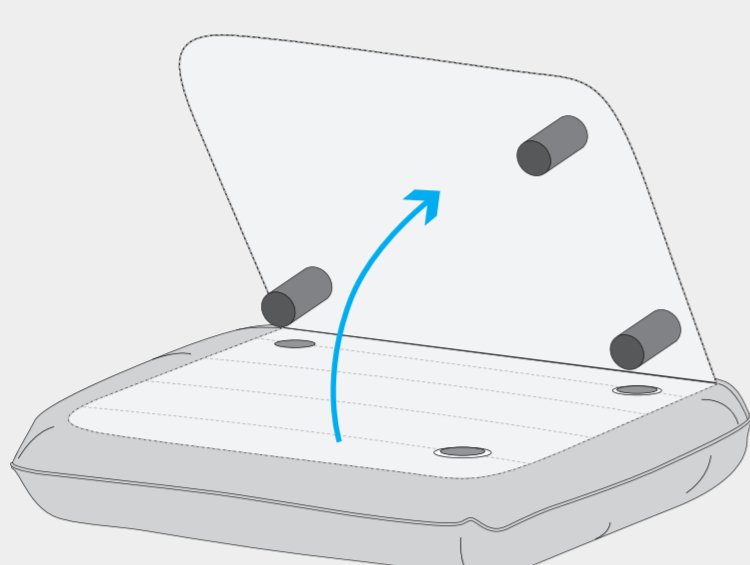
STEP 2



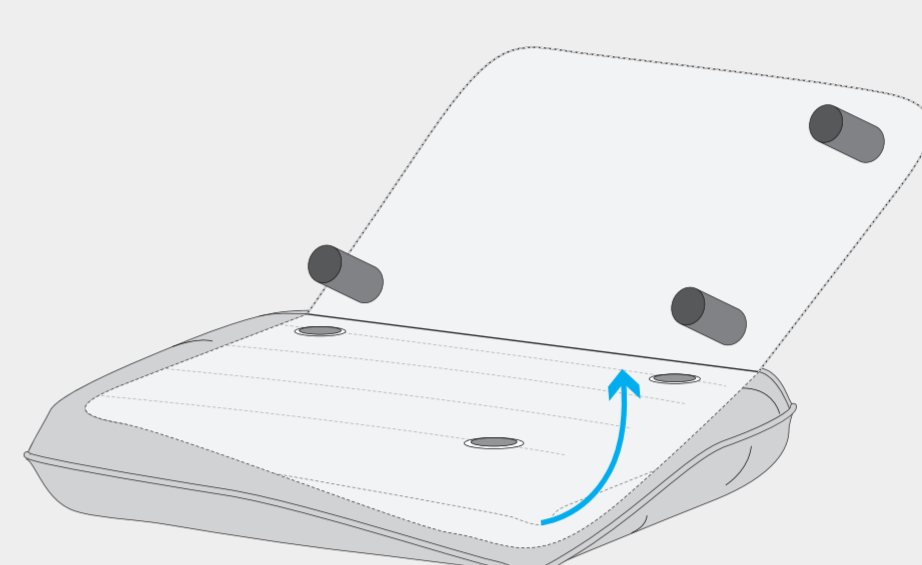
STEP 3



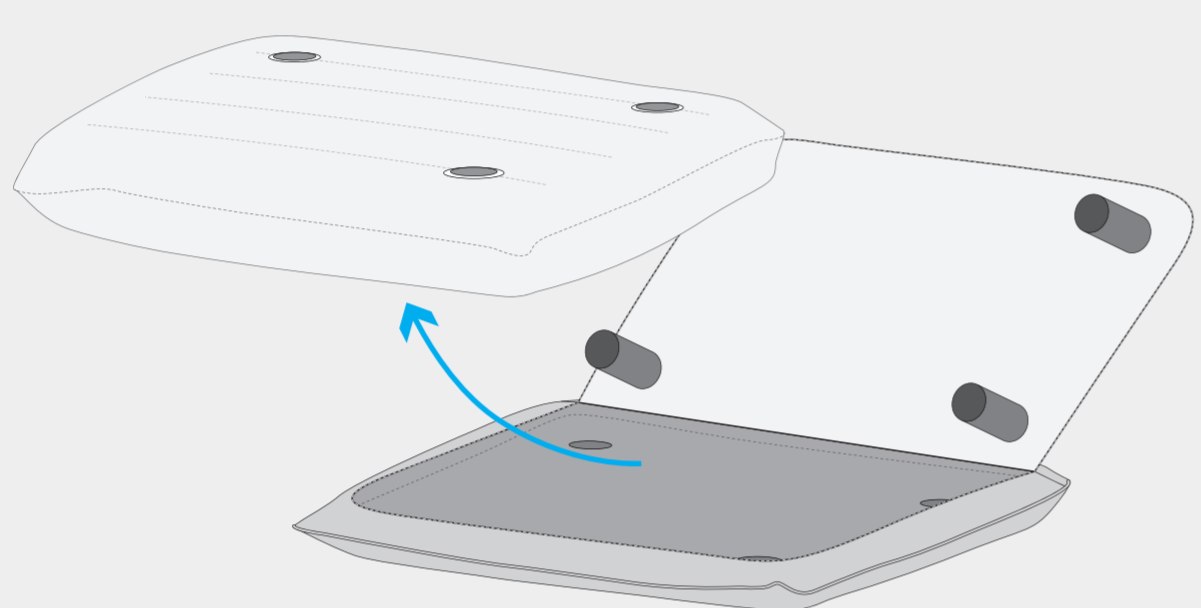
STEP 4



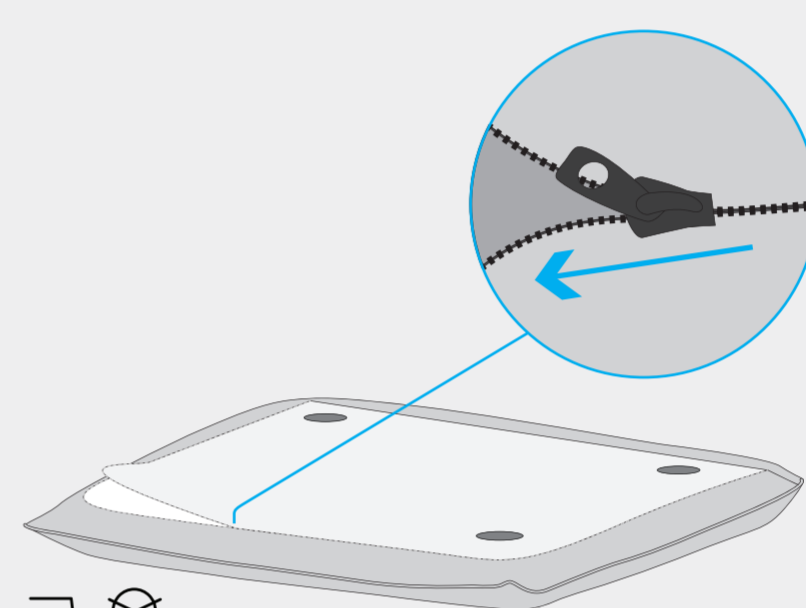
STEP 5



STEP 6

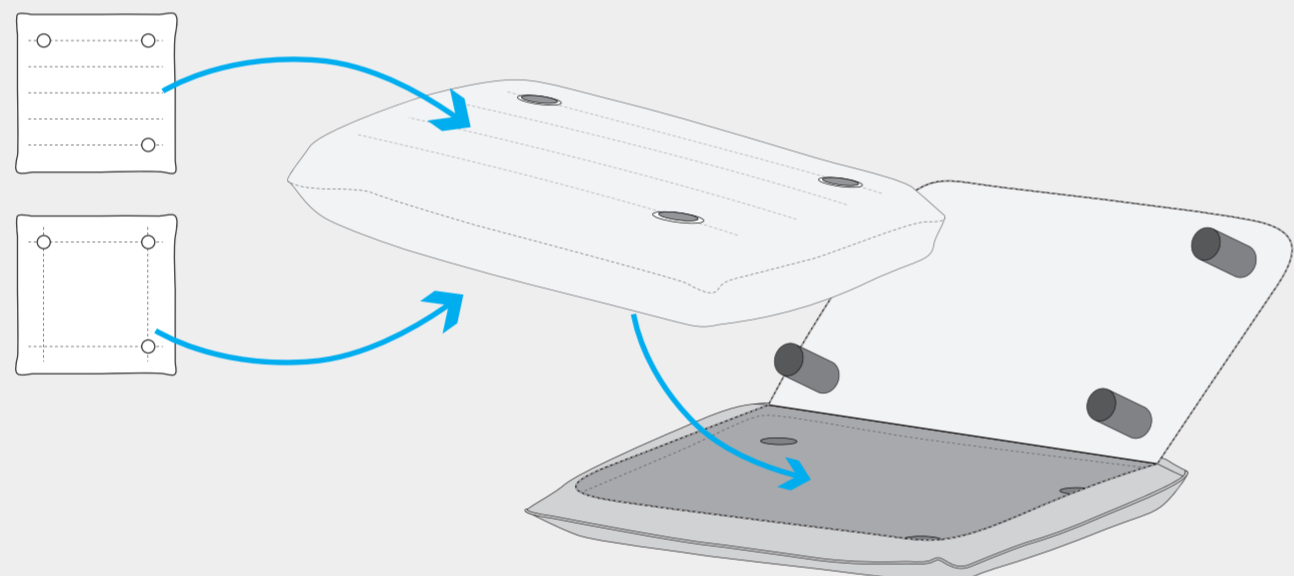


STEP 7



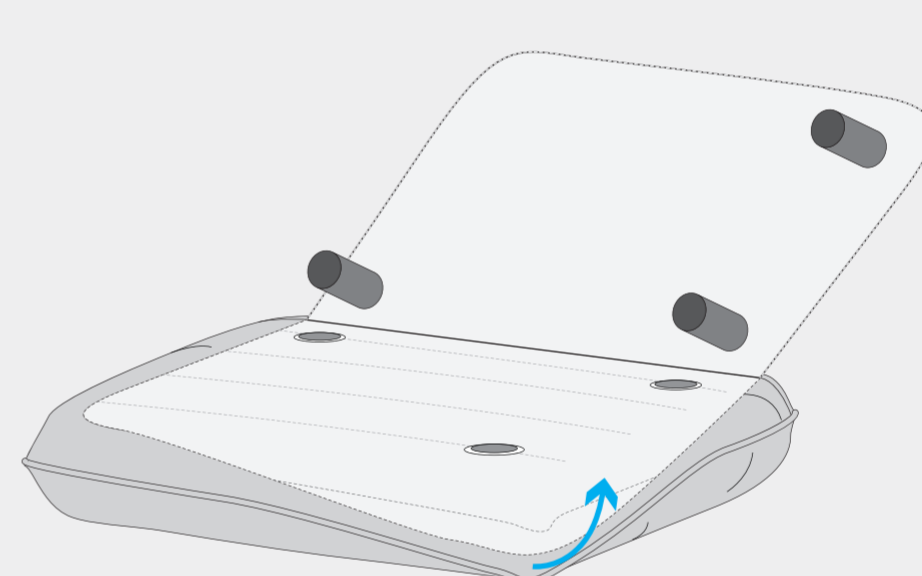
Wash inside out
Zipper closed
Iron the outside of the cover on the lowest setting in order to reactivate the water-repellent coating after washing.

STEP 8

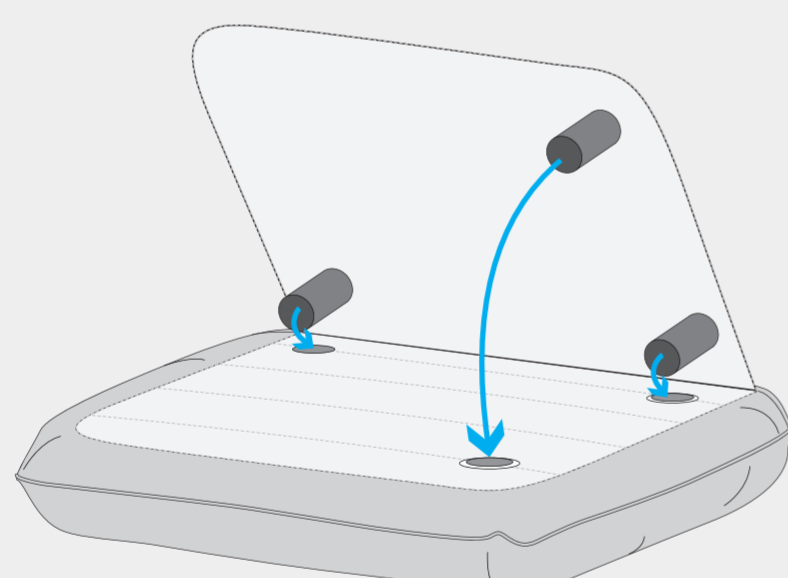


Make sure the pillow is in the right orientation.

STEP 9

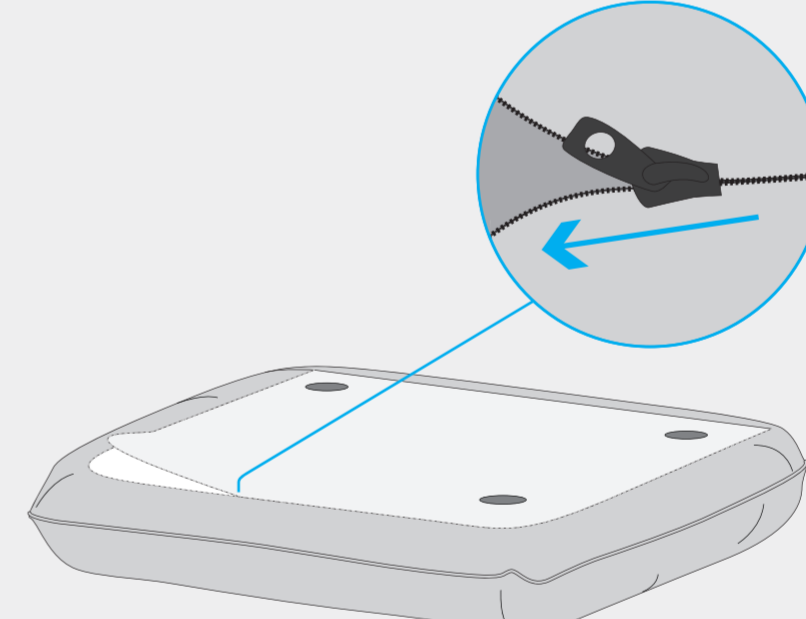


STEP 10

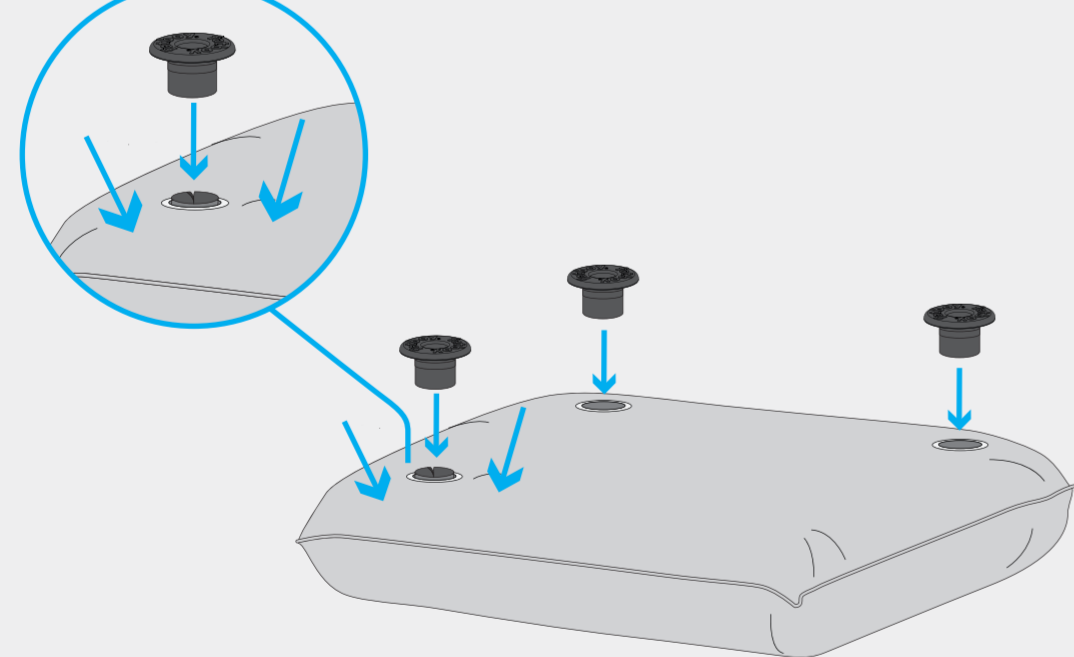


Keep the tubes 'straight'
Don't wrinkle the tubes

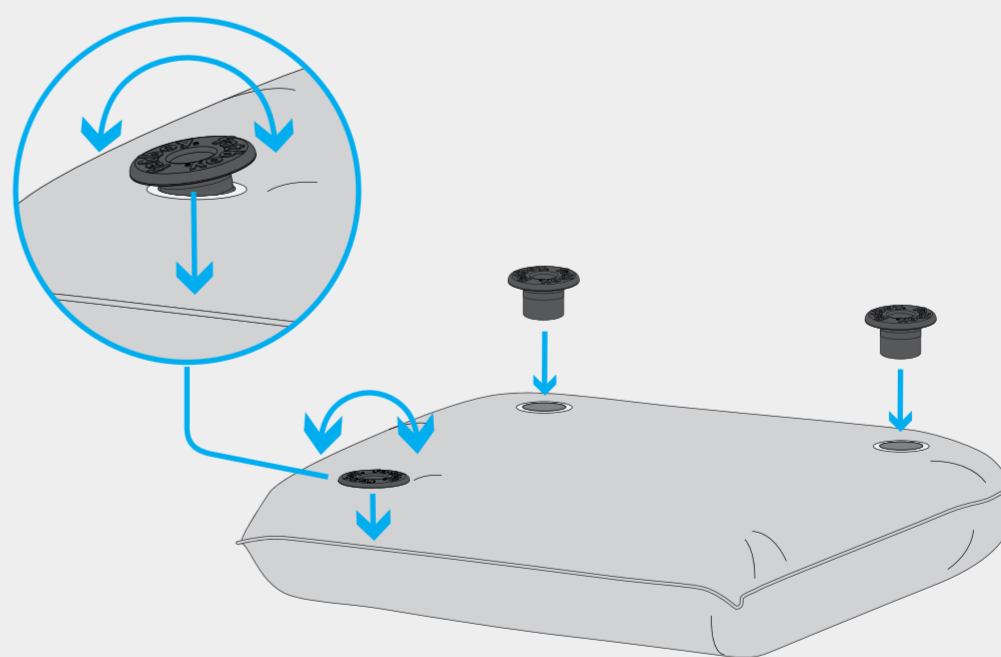
STEP 11



STEP 12

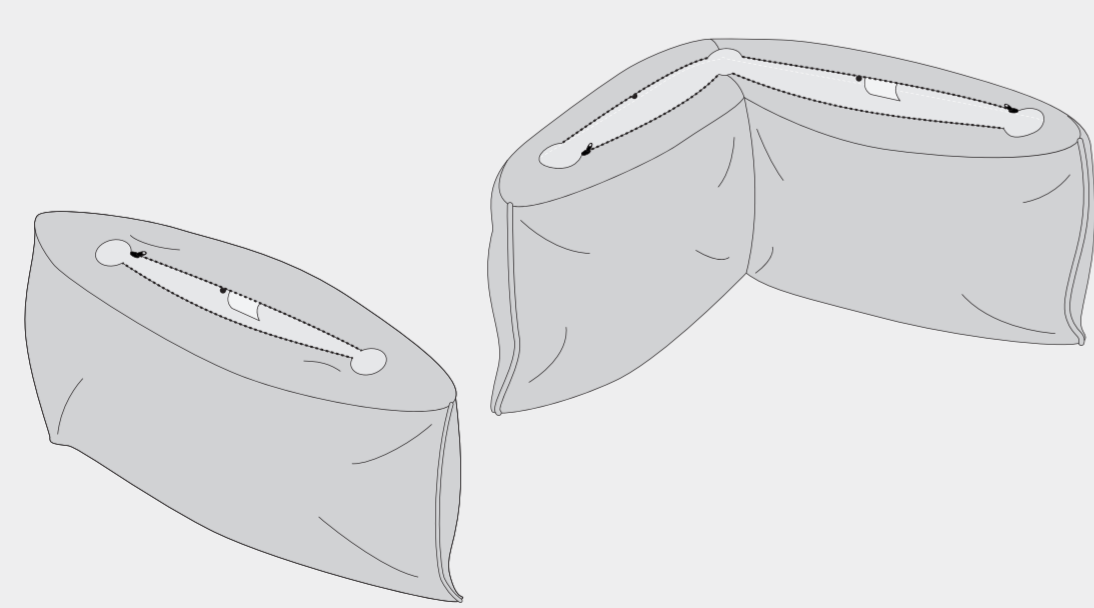


STEP 13

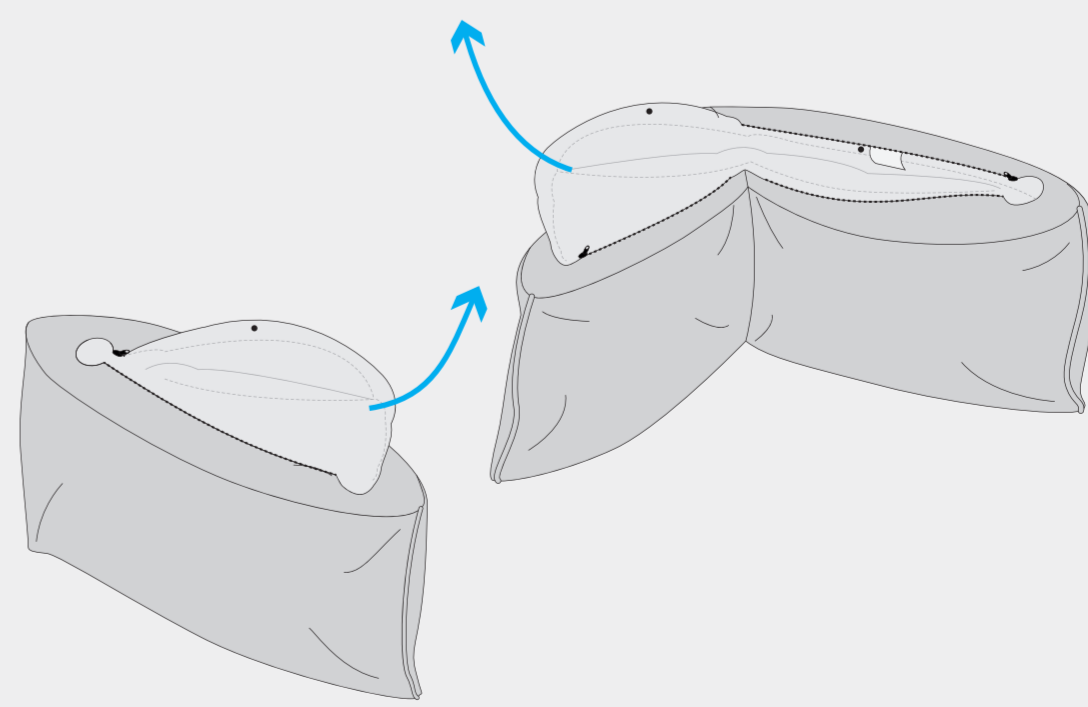


'Wiggle' the tube guides in to make them stick with velcro.

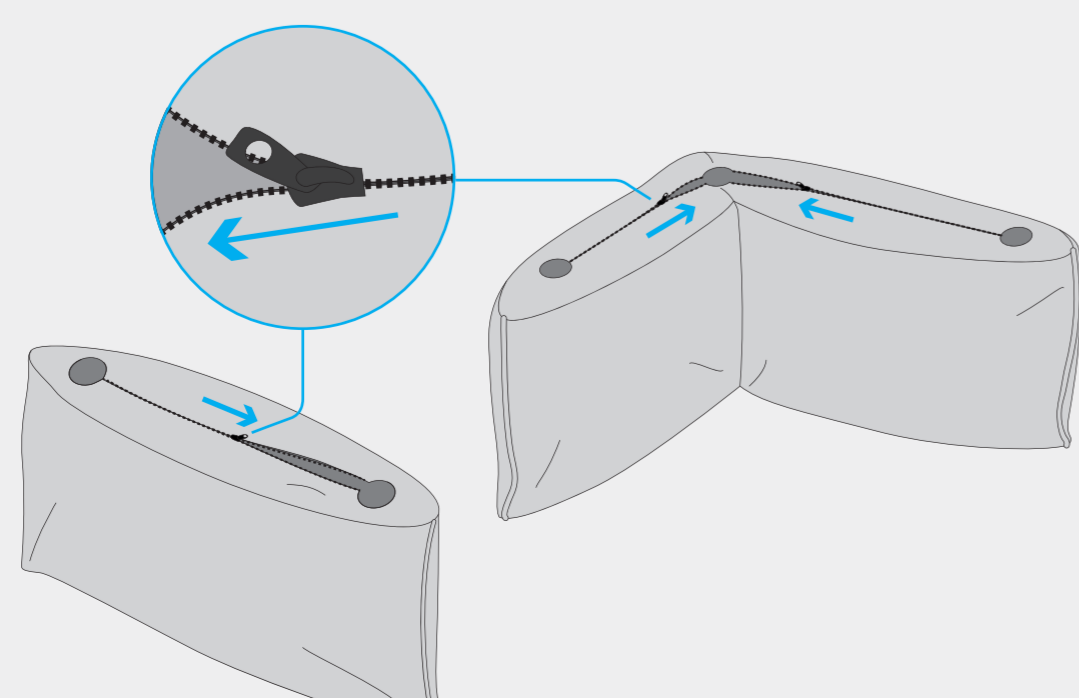
STEP 14



STEP 15



STEP 16



Wash inside out
Zipper closed
Iron the outside of the cover on the lowest setting in order to reactivate the water-repellent coating after washing.

STEP 17

